

# SAFATWO

de GRISOGONO  
GENEVE

*DAMAC*



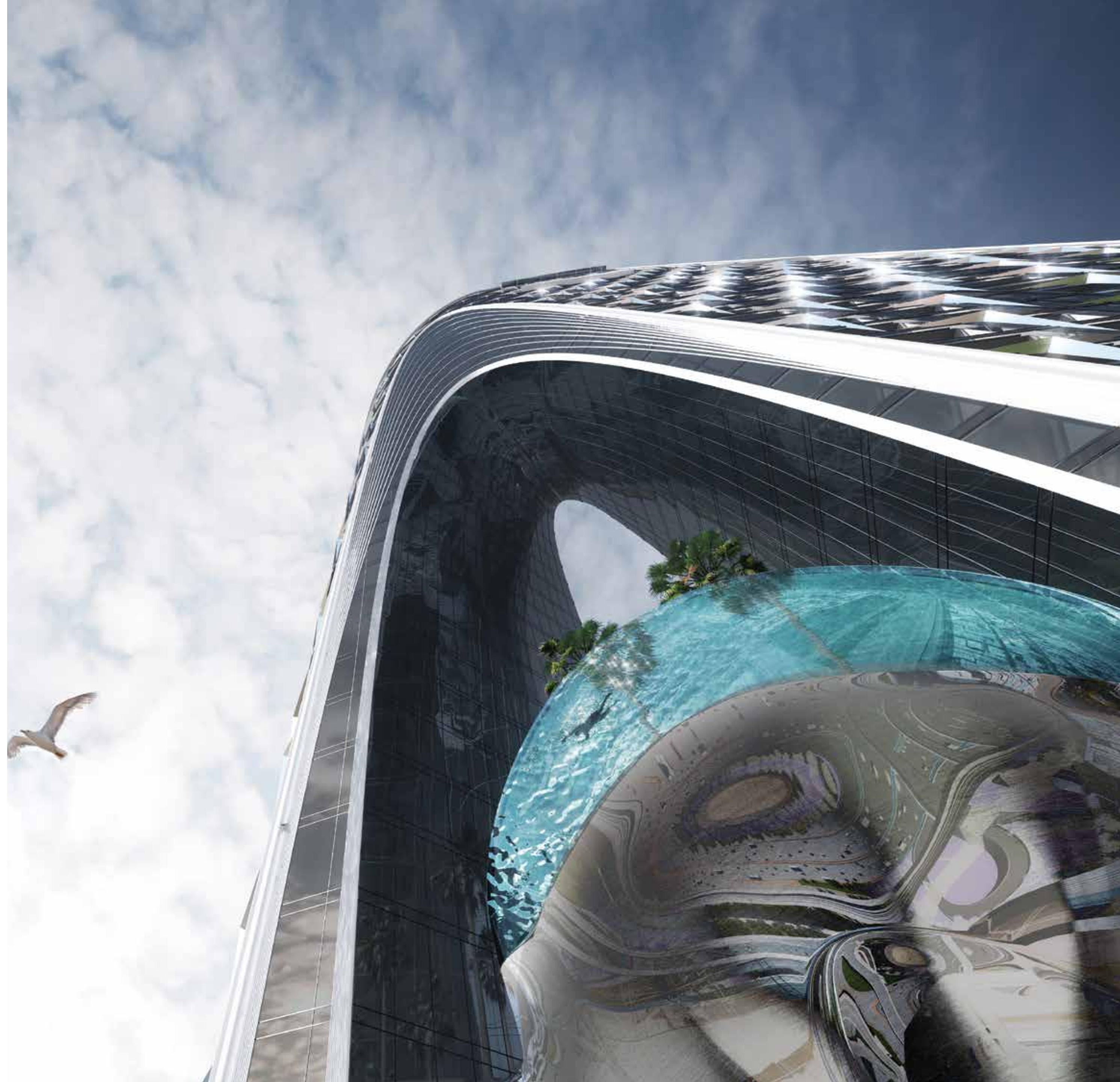
THE FUTURE OF LUXURY

# SAFATWO

de GRISOGONO  
GENEVE



A S E Q U E L  
S O  
S T U N N I N G ,  
I T ' S  
O U T O F  
T H I S  
W O R L D .





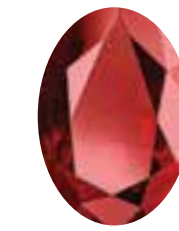
I M A G I N E B E I N G  
F A C E T O F A C E W I T H  
A D R E A M C O M E T R U E .

A P L A C E T H A T G O E S  
B E Y O N D A N Y T H I N G  
Y O U ' V E E V E R K N O W N .





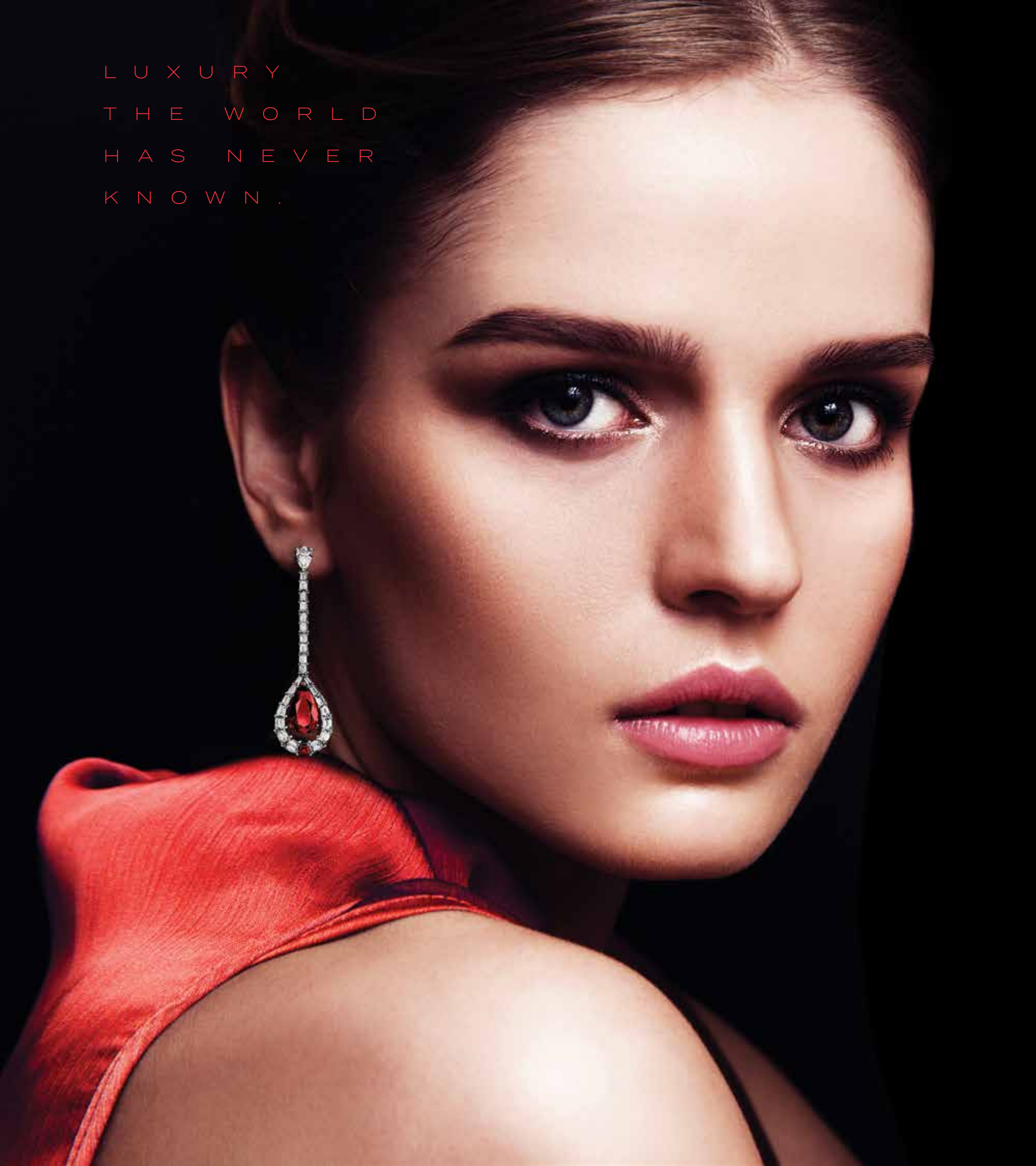
THE SPARKLE  
OF POSSIBILITY.



THE FINE LINES  
OF THE FUTURE.  
THE DESIGN OF  
THINGS TO COME.

UNEXPECTED  
UNFORGETTABLE  
UNIMAGINABLE

LUXURY  
THE WORLD  
HAS NEVER  
KNOWN.





T O D A Y

A N D H E R E ,  
W H E R E T O D A Y  
A N D T O M O R R O W  
M E E T , I S W H E R E  
Y O U C O M E I N .



T O M O R R O W

S E T Y O U R E Y E S  
O N T H E F U T U R E  
R A C E I N T O T H E  
P O S S I B I L I T I E S .

S T E P I N T O T H E  
L U X U R Y O F T H E  
U N K N O W N A N D  
A C C E P T A N  
I N V I T A T I O N I N T O  
T H E I M P O S S I B L E .





WELCOME HOME  
TO THE **FUTURE**.  
WELCOME TO

SAFAT TWO





S A F A T W O I S  
E X C L U S I V E L Y  
B R A N D E D B Y  
D E G R I S O G O N O  
O F S W I T Z E R L A N D



de GRISOGONO  
GENEVE



INSPIRED BY THE DE GRISOGONO SIGNATURE RUBIES AND THE COLOUR OF CHANGE, EXCITEMENT AND LIFE ITSELF, THE TOWER SHOWCASES STUNNING SCARLET SHADES RIGHT FROM THE MAGNIFICENT LOBBY ENTRANCE TO THE INTERIOR DETAILING AND FURNITURE.



S T E P  
I N T O  
T H E  
L I G H T

INSPIRED BY THE SUN, THE DAZZLING  
SPLENDOUR THAT IS SAFA TWO IS SET  
TO BECOME THE MOST PROMINENT  
LANDMARK ON THE CITY'S GOLDEN  
MILE. ITS UNIQUE DESIGN, MEANT  
TO EMULATE A CUT DIAMOND, IS  
INSTANTLY RECOGNIZABLE FROM  
MILES AWAY.

# GATEWAY TO THE CITY

SAFA TWO SITS ACROSS THE ROAD FROM SAFA ONE, AND TOGETHER, THE TWO DEVELOPMENTS ARE POISED TO FORM AN ELEGANT ARCHWAY, MARKING THE PASSAGE BETWEEN CENTRAL DUBAI AND ITS NEWER AREAS. THE FORMER HAS BEEN INTENTIONALLY DESIGNED TO OFFER RESIDENTS STUNNING VIEWS ALL AROUND, INCLUDING THOSE OF THE CANAL, BURJ AL ARAB, THE WORLD ISLANDS AND THE PALM JUMEIRAH.







S O A K  
U P T H E  
S U N

UNEXPECTED AND EXCEPTIONAL, THE AMENITIES ARE OBVIOUSLY, SECOND TO NONE. DESIGNED TO STAND OUT, THE PODIUM LEVEL ARTIFICIAL BEACH POOL TRANSPORTS YOU TO THE SANDS OF NAVAGIO OR LA CONCHA, GIVING YOU EVERY EXCUSE TO BASK IN THE SHADE OF NATURAL PALM TREES AS YOU TAKE IN THE MAGNIFICENT DUBAI SKYLINE.







T H E  
R U B Y  
H E A R T





DIP INTO  
INFINITY

HIGH ABOVE THE PODIUM  
ON THE 60TH FLOOR SITS  
ONE OF SAFA TWO'S UNIQUE  
FEATURES AND POSSIBLY  
ITS MOST RECOGNIZABLE  
ONE - THE APPROPRIATELY  
NAMED 'RUBY HEART'.





APART FROM BEING AN ARCHITECTURAL  
MARVEL, THE HEART ALSO HOSTS SEVERAL  
OPULENT AMENITIES SUCH AS A ONE-  
OF-A-KIND SAPPHIRE INFINITY POOL  
OVERLOOKING SHEIKH ZAYED ROAD AND  
HIGH-END RESTAURANTS.







YOUR  
UNIQUE  
ADDRESSES

ABOVE THE RUBY HEART ARE THE SUPER LUXURY FLOORS OF SAFA TWO, WHICH ARE IN TURN CROWNED BY THE 85TH FLOOR, RESPLENDENT WITH A HOST OF AVANT-GARDE AMENITIES DESIGNED TO TAKE YOUR BREATH AWAY.

FOG FOREST

OBSERVATORY

EDGE WALK

GLASS SLIDE

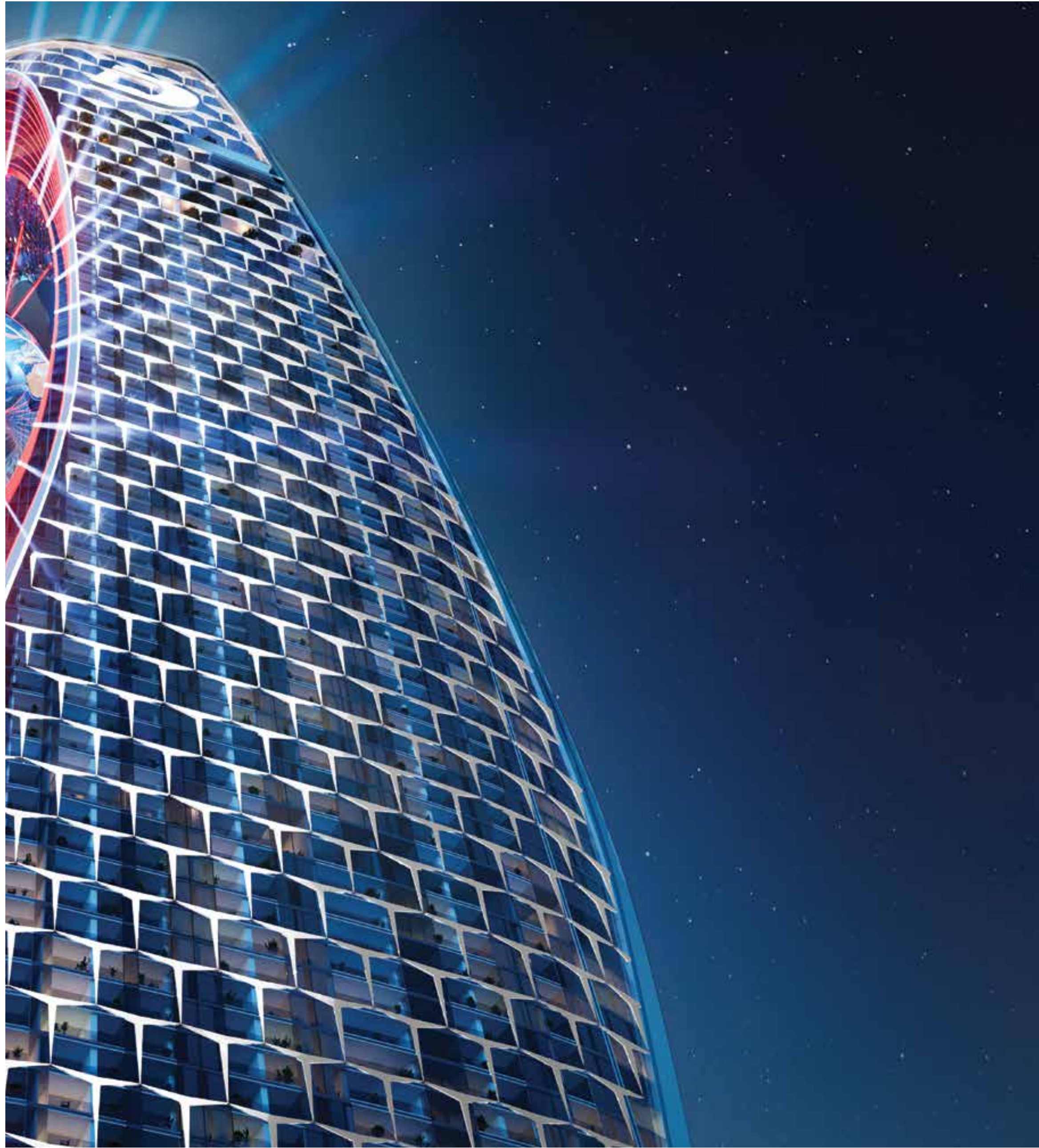
SELECTION OF CAFES  
& RESTAURANTS



W A L K  
A B O V E  
T H E  
C L O U D S

THE SAFA TWO EDGE WALK EXPERIENCE PROVIDES A GENEROUS DOSE OF ADRENALINE FOR THRILL-SEEKERS AS THEY WALK ON THE EDGE OF THE ABYSS, LOOKING DOWN AT THE CLOUDS. NOT TO BE OUTDONE, THE SPIRALLING GLASS SLIDE IS SET TO BE AN EXHILARATING RIDE THAT COMES WITH A TRULY SPECTACULAR VIEW OF THE HEART OF DUBAI FOR THOSE DARING ENOUGH TO TRY IT.







O N T O P

O F T H E

W O R L D

IMAGINE A ROOFTOP TROPICAL PARADISE PERPETUALLY SHROUDED IN MIST. NOT ONLY IS THIS DUBAI'S FIRST AND ONLY FOG FOREST, IT'S ALSO THE HIGHEST ONE IN THE WORLD.



LET CALM WASH OVER AS YOU STROLL  
THROUGH THIS ETHEREAL GARDEN OR  
DINE AT THE RESTAURANT. FOR A CHANGE  
OF VIEW, VISIT THE HIGHEST ACCESSIBLE  
POINT IN THE BUILDING AT THE SAFA  
TWO OBSERVATORY AND TAKE IN THE  
MESMERISING VIEWS OF THE CITY AROUND  
YOU  
AND THE FOREST BELOW.

H O M E S O F  
T H E F U T U R E



TRANSFORMATIVE



LIVING SPACES



EACH LUXURY APARTMENT MAKES USE OF IMPECCABLE TRANSFORMATIVE LIVING SPACES, USING MOVABLE WALLS TO GIVE YOU COMPLETE FLEXIBILITY OVER YOUR HOME. CHANGE THE LAYOUT WHENEVER YOU WANT - IT'S AS SIMPLE AS OPENING A DOOR OR A WINDOW.









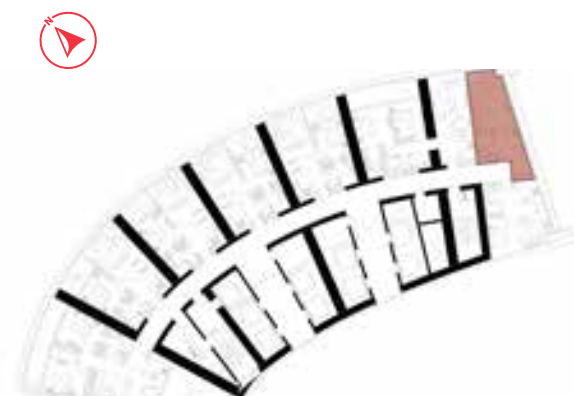




F L O O R  
P L A N S

# STUDIO

TYPE-1  
LEVEL: 15



LEVEL: 15

# STUDIO

TYPE-2  
LEVEL: 15



LEVEL: 15

# STUDIO

TYPE-3  
LEVELS: 17-18



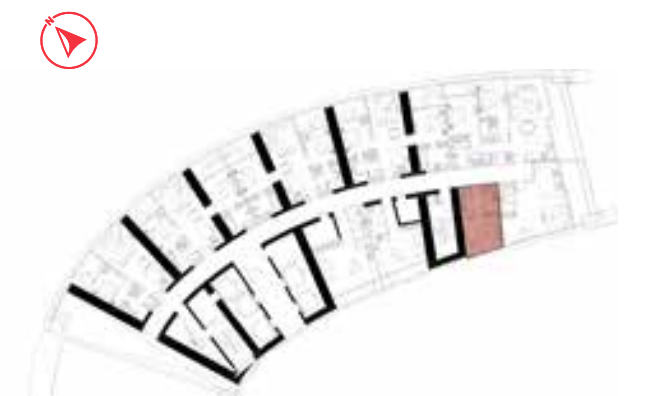
LEVELS: 17,18

# STUDIO

TYPE-4  
LEVELS: 23-36 & 49-58



LEVELS: 23,24,25,26,27,28,29,30,31,  
32,33,34,35,36



LEVELS: 49,50,51,52,53,54,55,56,57,58

# STUDIO

TYPE-5  
LEVELS: 46, 70 & 72



LEVELS: 46, 70 & 72

# STUDIO

TYPE-7  
LEVELS: 48-58



LEVELS: 48,49,50,51,52,53,54,55,56,57,58

# STUDIO

TYPE-8  
LEVELS: 49-50



LEVELS: 49,50

# STUDIO

TYPE-9  
LEVELS: 52-58



LEVELS: 52,53,54,55,56,57,58



# STUDIO

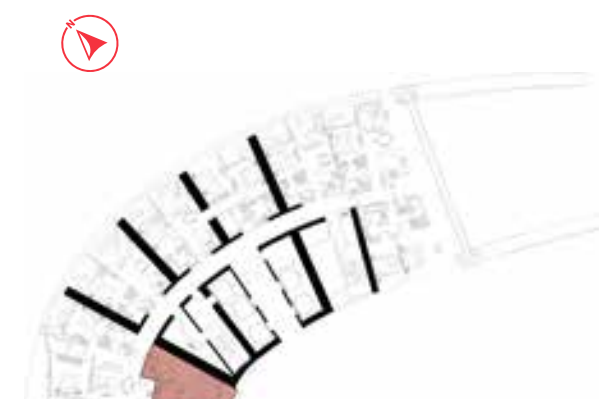
TYPE-10  
LEVEL: 70



LEVEL: 70

# STUDIO

TYPE-12  
LEVELS: 45 & 71



LEVELS: 45 & 71

# STUDIO

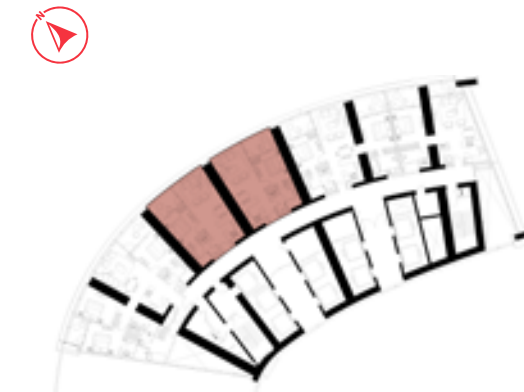
TYPE-13  
LEVELS: 19



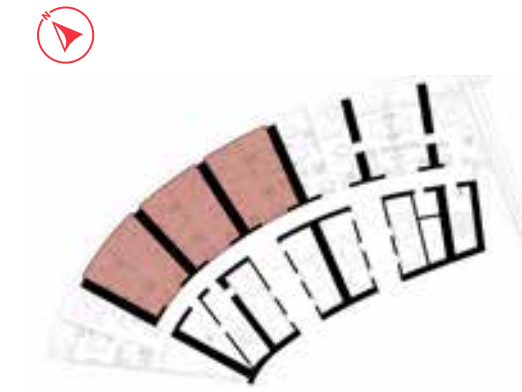
LEVEL: 19

# 1 BEDROOM

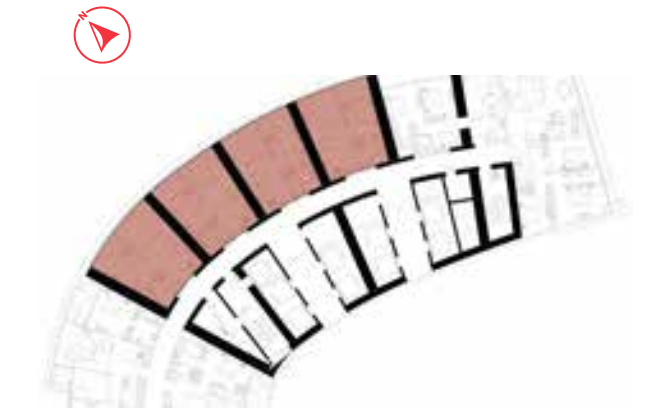
TYPE-1  
LEVELS: 11, 12-14, 15-30, 31-36, 38-58 & 67-72



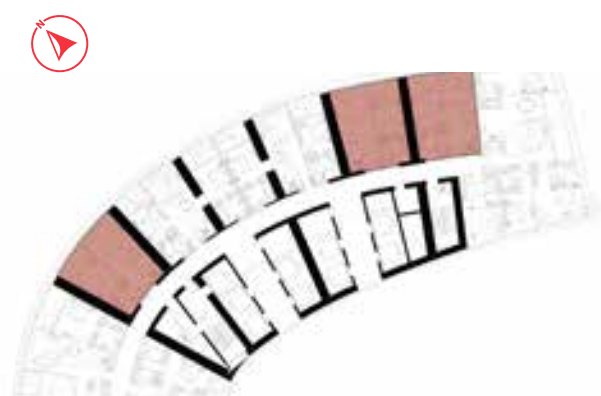
LEVEL: 11



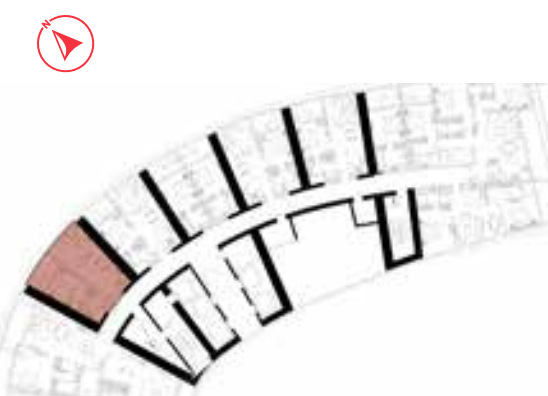
LEVELS: 12,13,14



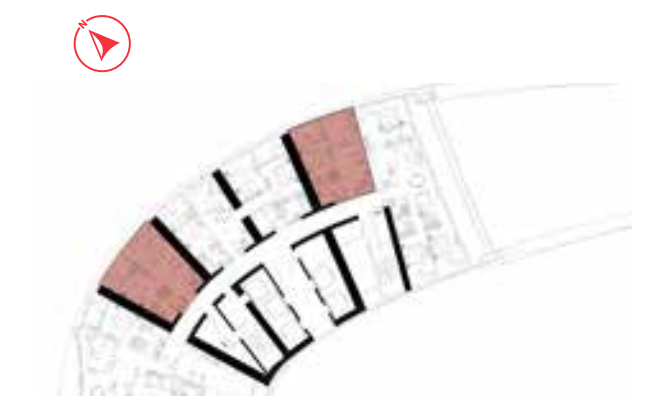
LEVELS: 15,16,17,18,19,20,21,22,23,  
24,25,26,27,28,29,30



LEVELS: 31,32,33,34,35,36



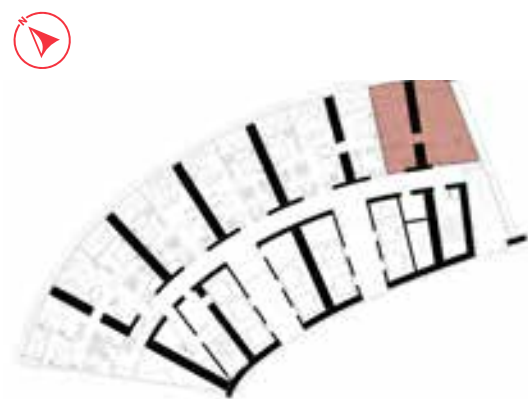
LEVELS: 38,39,40,41,42,43,44,45,46,47,48,  
49,50,51,52,53,54,55,56,57,58



LEVELS: 67,68,69,70,71,72

# 1 BEDROOM

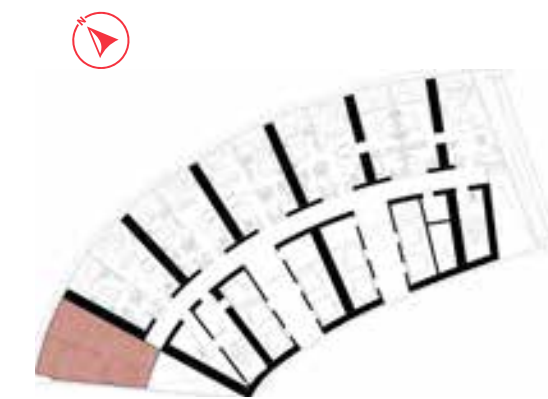
TYPE-6  
LEVELS: 11-14



LEVELS: 11,12,13,14

# 1 BEDROOM

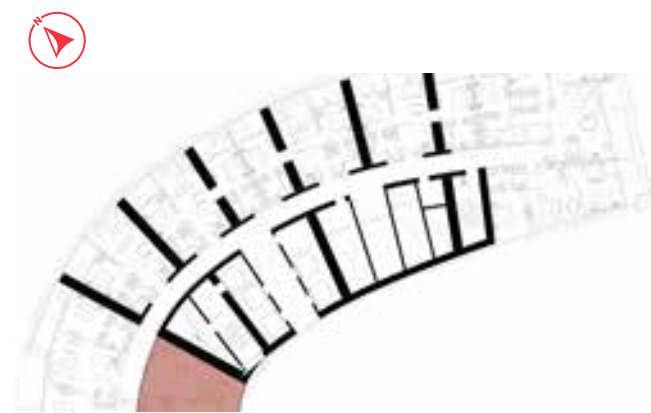
TYPE-7  
LEVELS: 12 & 13



LEVELS: 12,13

# 1 BEDROOM

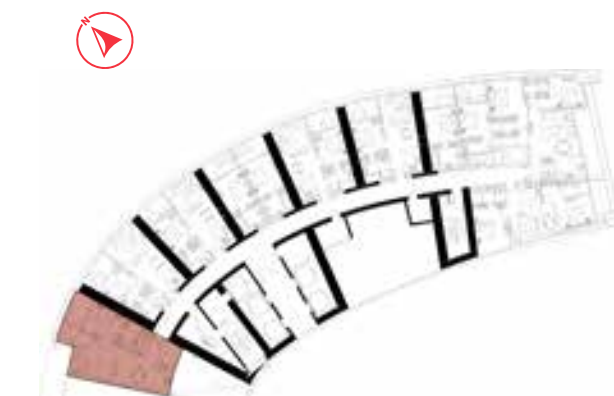
TYPE-9  
LEVELS: 20-36 & 38-44



LEVELS: 20,21,22,23,24,25,26,27,28,29,30,31,  
32,33,34,35,36,38,39,40,41,42,43,44

# 1 BEDROOM

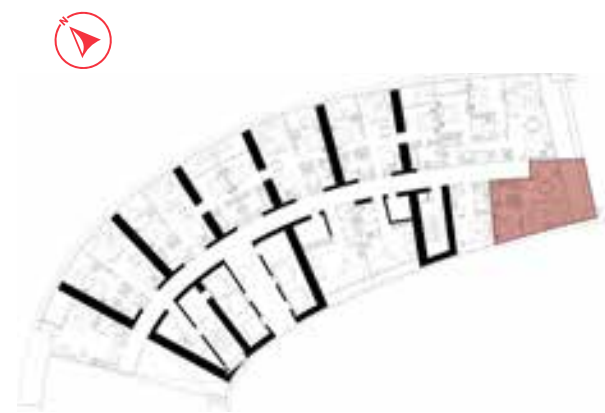
TYPE-11  
LEVEL: 47



LEVEL: 47

# 1 BEDROOM

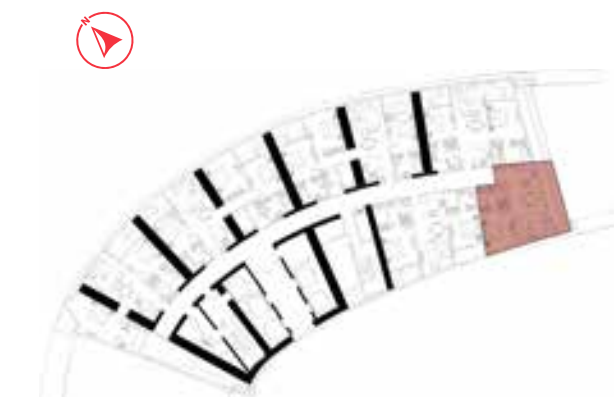
TYPE-12  
LEVELS: 49-51



LEVELS: 49,50,51

# 1 BEDROOM

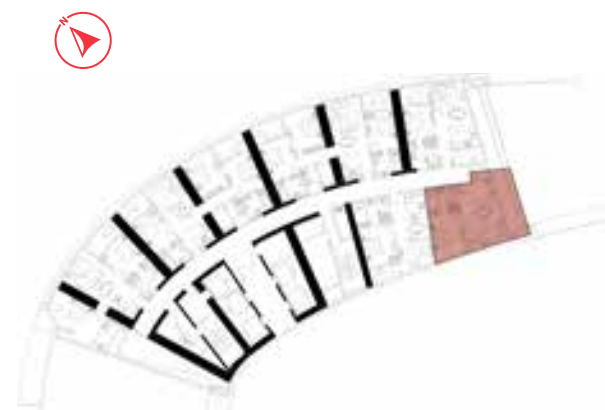
TYPE-13  
LEVELS: 60-61



LEVELS: 60,61

# 1 BEDROOM

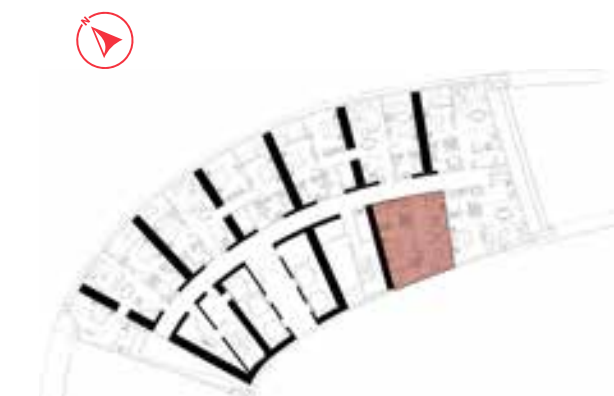
TYPE-14  
LEVELS: 62-64



LEVELS: 62,63,64

# 1 BEDROOM

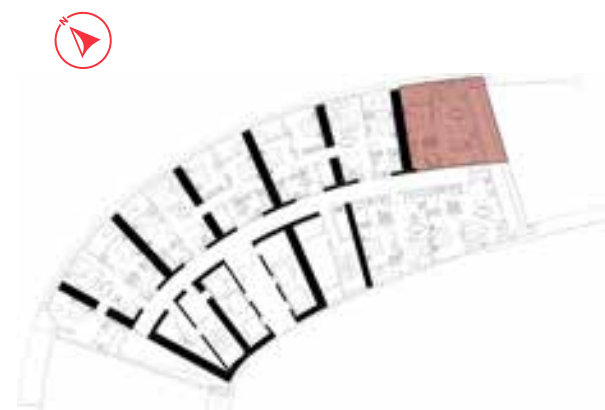
TYPE-15  
LEVELS: 62-66



LEVELS: 62,63,64,65,66

# 1 BEDROOM

TYPE-16  
LEVEL: 64



LEVEL: 64

# 1 BEDROOM

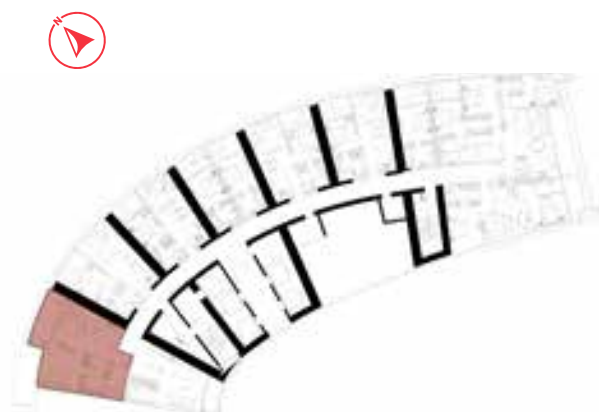
TYPE-17  
LEVEL: 14



LEVEL: 14

# 1 BEDROOM

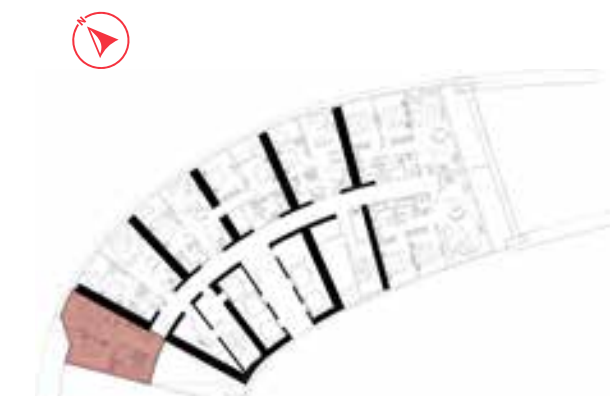
TYPE-18  
LEVEL: 46



LEVEL: 46

# 1 BEDROOM

TYPE-19  
LEVELS: 67-69



LEVELS: 67,68,69



# 1 BEDROOM

TYPE-20  
LEVEL: 48



LEVEL: 48

# 1 BEDROOM

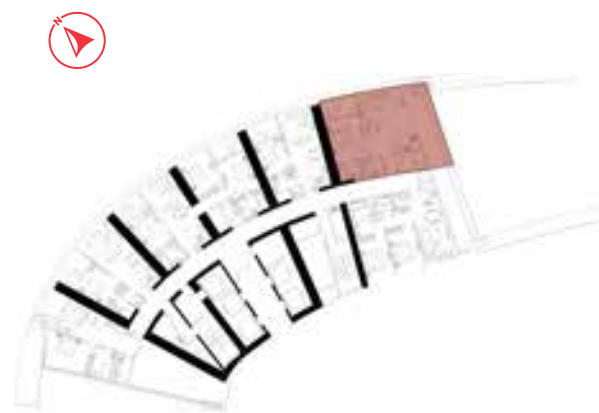
TYPE-21  
LEVEL: 70



LEVEL: 70

# 1 BEDROOM

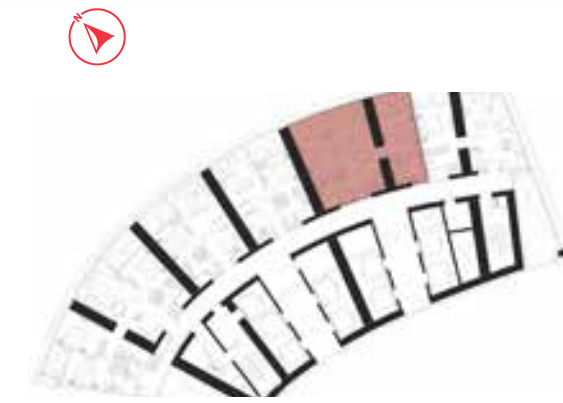
TYPE-22  
LEVEL: 69



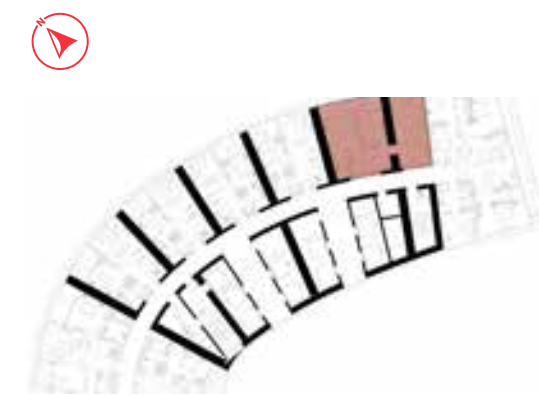
LEVEL: 69

# 2 BEDROOM

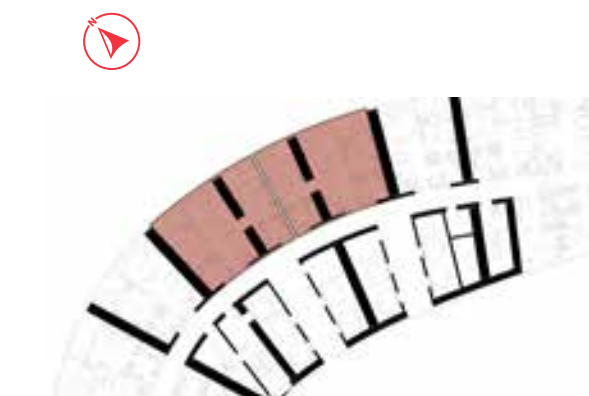
TYPE-1  
LEVELS: 11-14, 15-25 31-36 & 38-58



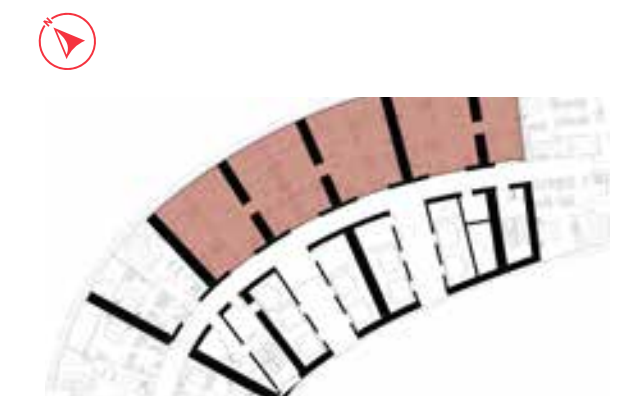
LEVELS: 11,12,13,14



LEVELS: 15,16,17,18,19,20,21,22,23,24,25



LEVELS: 31,32,33,34,35,36



LEVELS: 38,39,40,41,42,43,44,45,46,47,48,  
49,50,51,52,53,54,55,56,57,58

## 2 BEDROOM

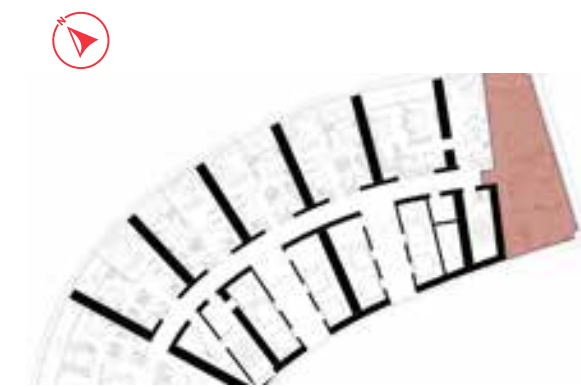
TYPE-2  
LEVELS: 15-16



LEVELS: 15,16

## 2 BEDROOM

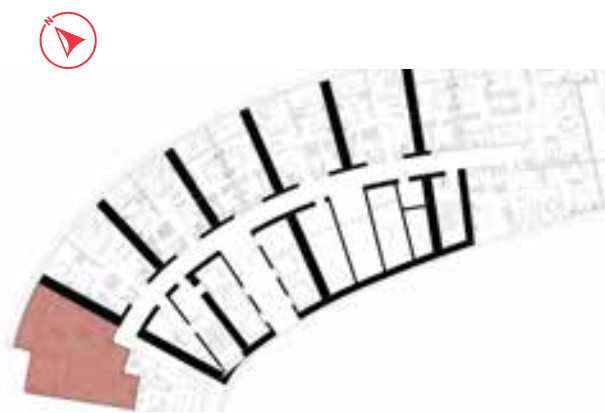
TYPE-4  
LEVELS: 16-17



LEVELS: 16,17

# 2 BEDROOM

TYPE-5  
LEVELS: 17-18 & 45



LEVELS: 17,18,45

# 2 BEDROOM

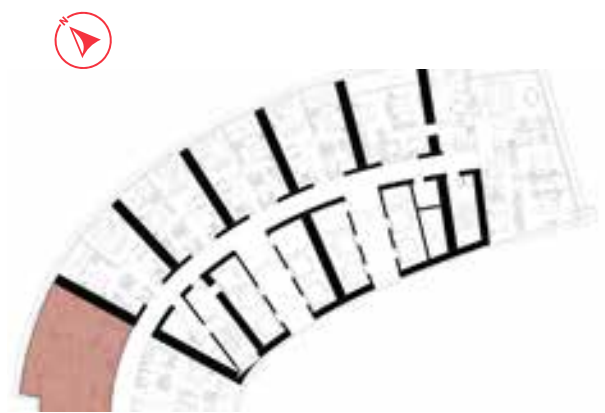
TYPE-6  
LEVEL: 19



LEVEL: 19

## 2 BEDROOM

TYPE-7  
LEVELS: 20-36 & 38-43



LEVELS: 20,21,22,23,24,25,26,27,28,29,30,31,  
32,33,34,35,36,38,39,40,41,42,43

## 2 BEDROOM

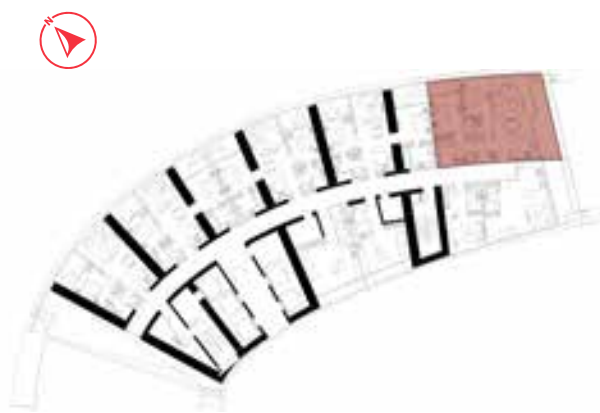
TYPE-8  
LEVELS: 38-48



LEVELS: 38,39,40,41,42,43,44,45,46,47,48

# 2 BEDROOM

TYPE-9  
LEVELS: 49-58



LEVELS: 49,50,51,52,53,54,55,56,57,58

# 2 BEDROOM

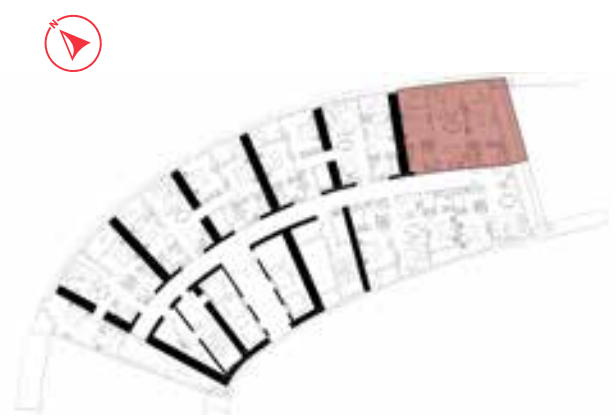
TYPE-10  
LEVELS: 60-66



LEVELS: 60,61,62,63,64,65,66

# 2 BEDROOM

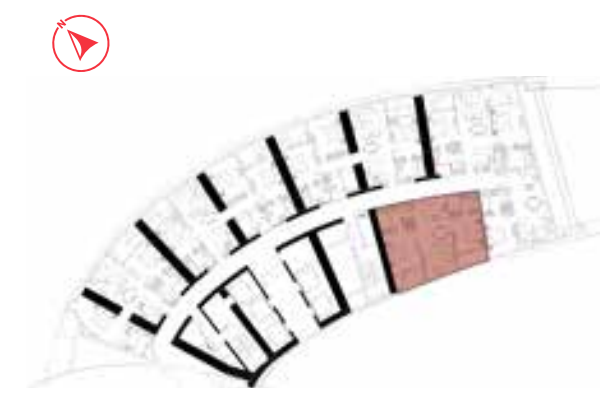
TYPE-11  
LEVELS: 60-61



LEVELS: 60,61

# 2 BEDROOM

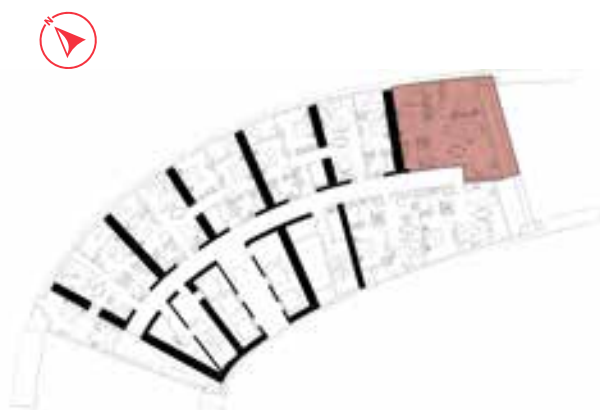
TYPE-12  
LEVELS: 60-61



LEVELS: 60,61

## 2 BEDROOM

TYPE-13  
LEVELS: 62-63



LEVELS: 62,63

## 2 BEDROOM

TYPE-14  
LEVELS: 67-69

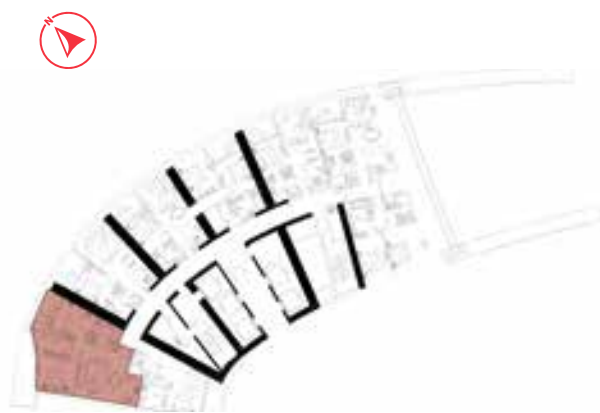


LEVELS: 67,68,69



## 2 BEDROOM

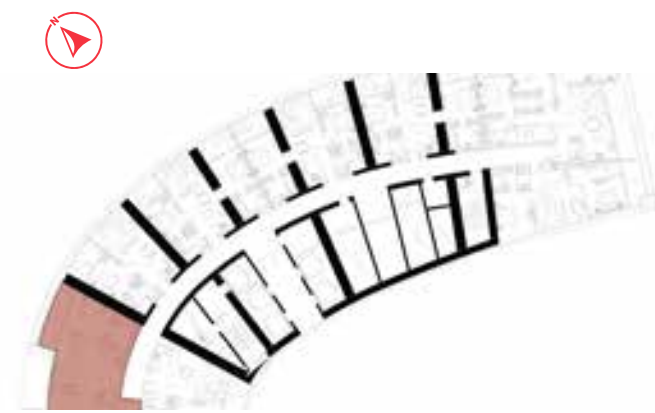
TYPE-15  
LEVEL: 71



LEVEL: 71

## 2 BEDROOM

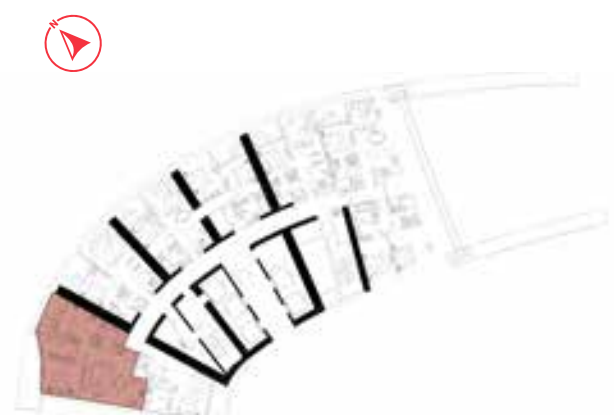
TYPE-16  
LEVEL: 44



LEVEL: 44

## 2 BEDROOM

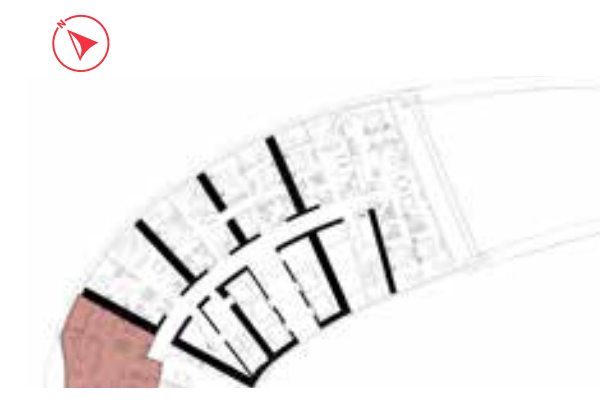
TYPE-17  
LEVEL: 67-68



LEVEL: 71

## 2 BEDROOM

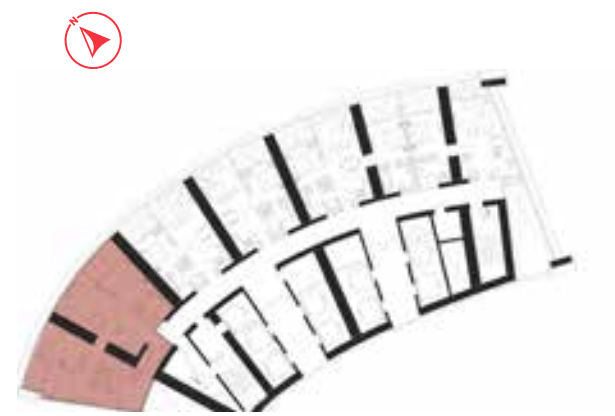
TYPE-18  
LEVEL: 72



LEVEL: 72

### 3 BEDROOM

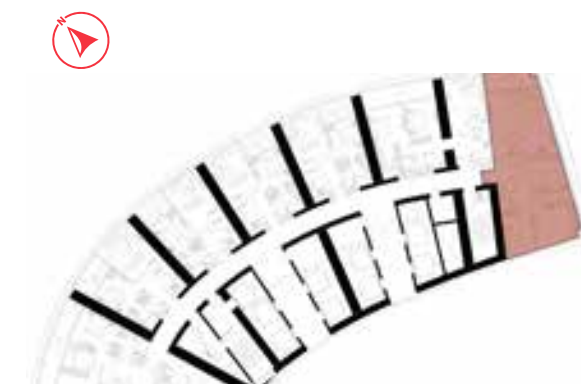
TYPE-1  
LEVEL: 11



LEVEL: 11

### 3 BEDROOM

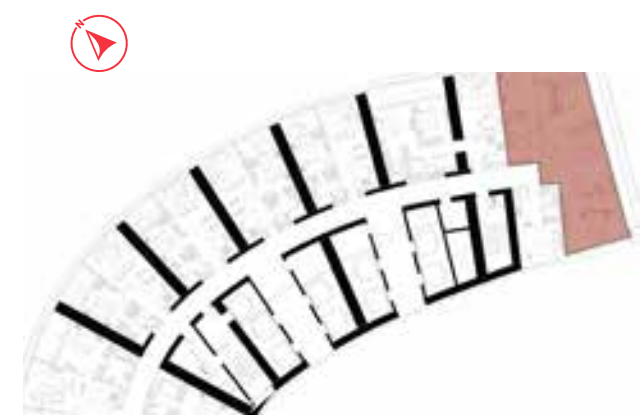
TYPE-2  
LEVELS: 18-22



LEVELS: 18,19,20,21,22

# 3 BEDROOM

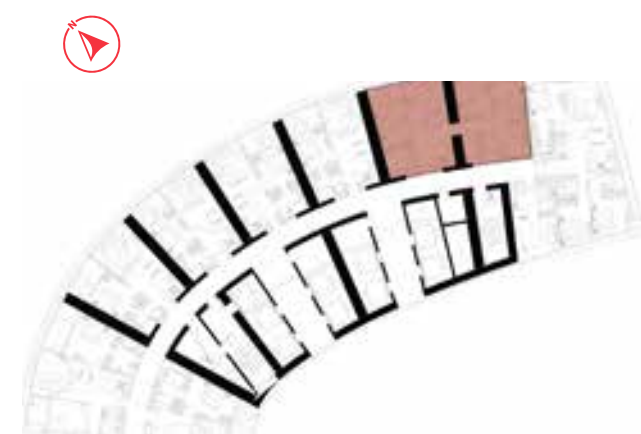
TYPE-3  
LEVELS: 23-25



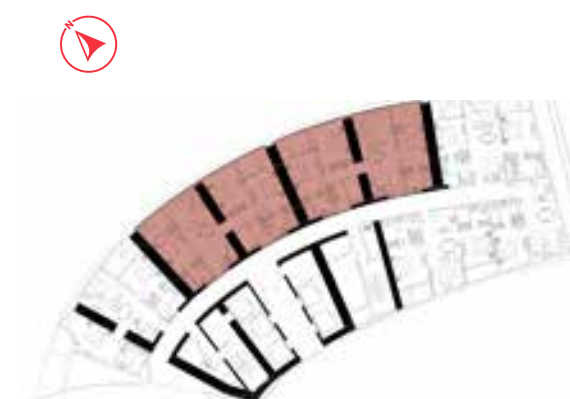
LEVELS: 23,24,25

# 3 BEDROOM

TYPE-4  
LEVELS: 26-30, 60-66 & 67-72



LEVELS: 26,27,28,29,30



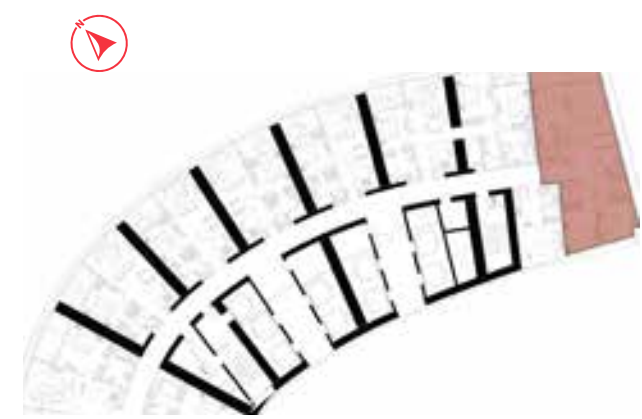
LEVELS: 60,61,62,63,64,65,66



LEVELS: 67,68,69,70,71,72

### 3 BEDROOM

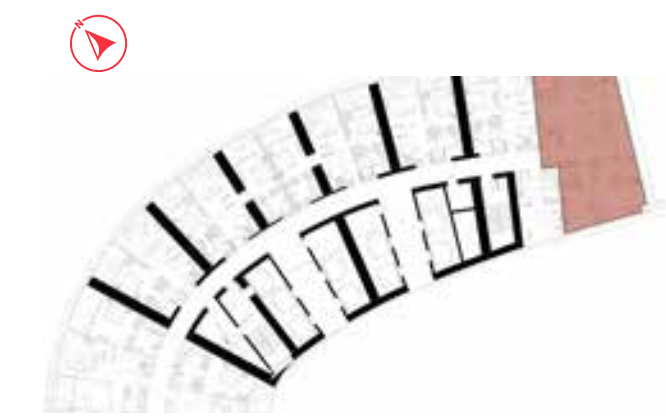
TYPE-5  
LEVELS: 26-30



LEVELS: 26,27,28,29,30

### 3 BEDROOM

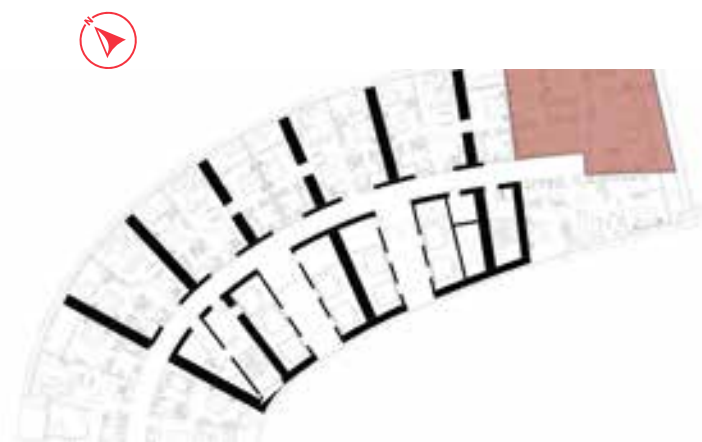
TYPE-6  
LEVELS: 31-36



LEVELS: 31,32,33,34,35,36

### 3 BEDROOM

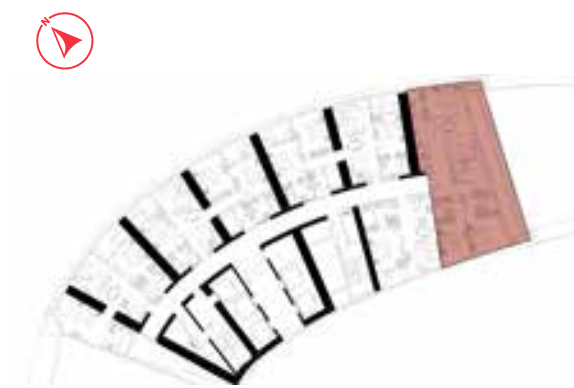
TYPE-7  
LEVELS: 38-48



LEVELS: 38,39,40,41,42,43,44,45,46,47,48

### 3 BEDROOM

TYPE-8  
LEVEL: 65



LEVEL: 65

### 3 BEDROOM

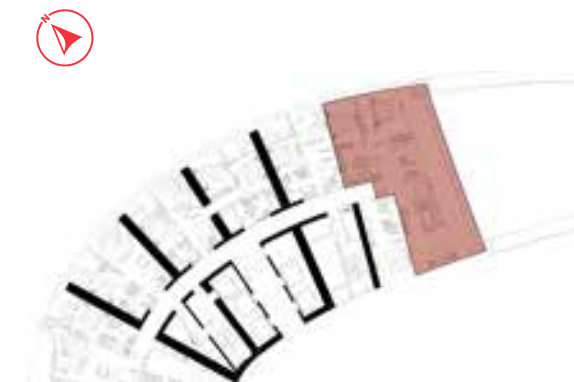
TYPE-9  
LEVELS: 66 & 72



LEVEL: 66,72

### 3 BEDROOM

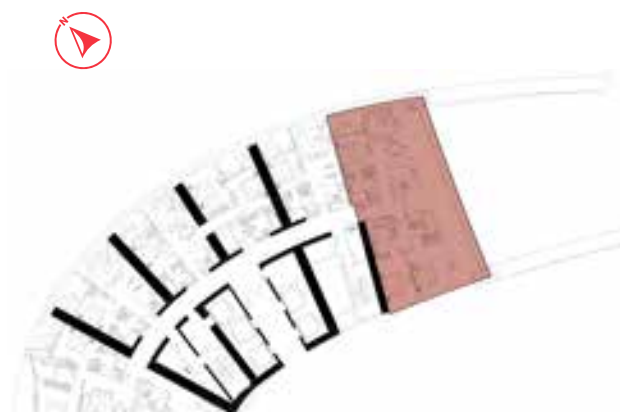
TYPE-10  
LEVEL: 70



LEVEL: 70

# 3 BEDROOM

TYPE-11  
LEVEL: 71



LEVEL: 71





# DAMAC PROPERTIES

LIVE THE LUXURY

DAMAC Properties has been at the forefront of the Middle East's luxury real estate market since 2002, delivering award-winning residential, commercial and leisure properties across the region, including the UAE, Saudi Arabia, Qatar, Jordan, Lebanon, Iraq, the Maldives, Canada, the United States, as well as the United Kingdom. Since then, the company has delivered approximately 39,400 homes, with a development portfolio of more than 28,000 at various stages of planning and progress.\*

Joining forces with some of the world's most eminent fashion and lifestyle brands, DAMAC has brought new and exciting living concepts to the market in collaborations that include a golf course managed by The Trump Organization, and luxury homes in association with Versace, Cavalli, Just Cavalli, de Grisogono, Paramount Hotels & Resorts, Rotana and Radisson Hotel Group. With a consistent vision, and strong momentum, DAMAC Properties is building the next generation of Middle Eastern luxury living.

DAMAC places a great emphasis on philanthropy and corporate social responsibility. The Hussain Sajwani – DAMAC Foundation, a joint initiative

between DAMAC Group and Hussain Sajwani, recently announced the launch 'Fresh Slate' in collaboration with the Dubai Police General Headquarters aimed at aiding detainees in Dubai's Punitive and Correctional Institutions who have been charged with petty offences.

The HSDF has also pledged Dh5 million for the 1 Billion Meals initiative launched by Vice President and Prime Minister of the UAE, and Ruler of Dubai, His Highness Sheikh Mohammed bin Rashid Al Maktoum, at the start of Ramadan 2022, aimed at providing meals to underprivileged communities in 50 countries across the world.

DAMAC also supported the vision of Sheikh Mohammed to train one million Arab coders in creating an empowered society through learning and skills development, an initiative that successfully wrapped up in May 2022.

*\*As of 31<sup>st</sup> December 2021.*

## LUXURY BY APPOINTMENT

CONTACT US AT ANY OF OUR OFFICES  
OR VISIT [DAMACPROPERTIES.COM](http://DAMACPROPERTIES.COM)

### UNITED ARAB EMIRATES

Dubai  
Tel: 800-DAMAC (800-32622)  
E-mail: [dubai@damacgroup.com](mailto:dubai@damacgroup.com)

Park Towers - Sales Centre,  
Dubai International Financial Centre

Aykon City - Sales Centre,  
Floor 63, Sheikh Zayed Road

DAMAC Hills - Sales Centre,  
Sheikh Zayed bin Hamdan Al Nahyan Street

Damac Hills - Sales Centre,  
Golf Veduta, Townhouse TH2

DAMAC Hills - Sales Centre,  
Bellavista, Carson Building

DAMAC Hills 2 - Sales Centre,  
Amazonia Cluster, Villa 333

DAMAC Hills 2 - Sales Centre,  
Water Town

### QATAR

Building 90, New Solta Area  
Ali bin Abi Talib Street  
Next to Omar bin Al Khattab Health Centre  
Tel: +974 44 666 986  
Fax: +974 44 554 576  
E-mail: [doha@damacgroup.com](mailto:doha@damacgroup.com)

### KINGDOM OF SAUDI ARABIA

Riyadh  
DAMAC Towers Riyadh  
South Tower  
Olaya District  
King Fahd Road  
PO Box 102460  
Tel: +966 11 835 0300  
E-mail: [ksa@damacgroup.com](mailto:ksa@damacgroup.com)

### TURKEY

Levazım, Mah. Koru Sk. Zorlu Center No: 2  
Ic Kapi No: 347 Beşiktaş/İstanbul, Turkey  
Tel: +90 212 892 0327  
Fax: +90 212 890 7184  
E-mail: [turkey.office@damacgroup.com](mailto:turkey.office@damacgroup.com)

### LEBANON

Unit 1801, 18th Floor  
DAMAC Tower  
Omar Daouk Street  
Mina El Hosn, Beirut Central District  
Tel: +961 81 647 200  
E-mail: [beirut@damacgroup.com](mailto:beirut@damacgroup.com)

### JORDAN

Al Istithmar Street  
Abdali Project  
Amman  
Opposite Abdali Mall Gate #1  
Tel: +962 6 510 7000  
Fax: +962 6 565 7896  
E-mail: [amman@damacgroup.com](mailto:amman@damacgroup.com)

### UNITED KINGDOM

4th Floor, 100 Brompton Road  
Opposite Harrods  
Knightsbridge, London  
SW3 1ER, United Kingdom  
Tel: +44 (0) 207 590 8050  
E-mail: [sales@damactower.co.uk](mailto:sales@damactower.co.uk)

***DAMAC***